

DSUB HD FE STR 62P PL3

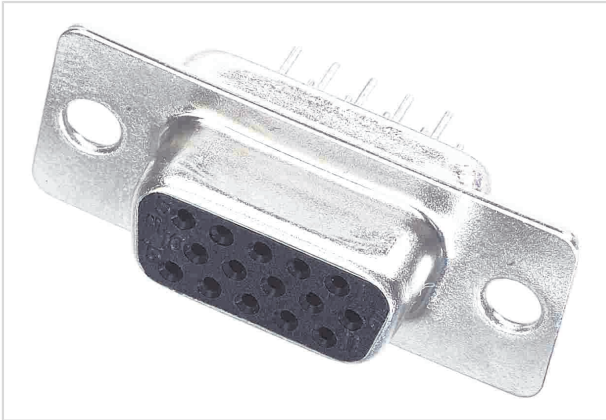


Image is for illustration purposes only. Please refer to product description.

| | |
|--------------------|---|
| Part number | 09 56 451 7500 |
| Specification | DSUB HD FE STR 62P PL3 |
| HARTING eCatalogue | https://b2b.harting.com/09564517500 |

Identification

| | |
|----------------------------|---------------------|
| Category | Connectors |
| Series | D-Sub |
| Identification | High Density |
| Element | Connector |
| Description of the contact | Stamped Straight |

Version

| | |
|--------------------|---|
| Termination method | Wave soldering termination |
| Gender | Female |
| Size | D-Sub 4 |
| Number of contacts | 62 |
| Locking type | Fixing flange with feed through hole \varnothing 3.1 mm |

Technical characteristics

| | |
|------------------------------------|--------------------------|
| Distance between rows | 1.98 mm |
| Contact spacing (termination side) | 2.41 mm |
| Rated current | 2 A |
| Clearance distance | ≥ 1 mm |
| Creepage distance | ≥ 1 mm |
| Insulation resistance | $> 5 \times 10^9 \Omega$ |
| Contact resistance | < 20 m Ω |
| Limiting temperature | -40 ... +85 °C |



Pushing Performance
Since 1945

Technical characteristics

| | |
|---------------------------|-------------------------------|
| Performance level | 3 |
| Mating cycles | ≥50 |
| Test voltage $U_{r.m.s.}$ | 1 kV |
| Isolation group | IIIa ($175 \leq CTI < 400$) |
| PCB thickness | 1.6 mm |
| Installation height | 4.1 mm |
| Hot plugging | No |

Material properties

| | |
|---|---|
| Material (insert) | Thermoplastic resin, glass-fibre filled (PBTP) Shell: steel, nickel plated |
| Colour (insert) | Black |
| Material (contacts) | Copper alloy |
| Surface (contacts) | Noble metal over Ni Mating side Sn over Ni Termination side |
| Material flammability class acc. to UL 94 | V-0 |
| RoHS | compliant with exemption |
| RoHS exemptions | 6(c): Copper alloy containing up to 4 % lead by weight |
| ELV status | compliant with exemption |
| China RoHS | 50 |
| REACH Annex XVII substances | Not contained |
| REACH ANNEX XIV substances | Not contained |
| REACH SVHC substances | Yes |
| REACH SVHC substances | Lead |
| ECHA SCIP number | 5f2b96e8-feaf-4131-b3cd-8b723c130d93 |
| California Proposition 65 substances | Yes |
| California Proposition 65 substances | Lead |
| Requirement set with Hazard Levels | R26 |

Specifications and approvals

| | |
|----------------|-----------------------|
| Specifications | DIN 41652 |
| UL / CSA | UL 1977 ECBT2.E102079 |

Commercial data

| | |
|----------------|----|
| Packaging size | 50 |
|----------------|----|



Pushing Performance
Since 1945

Commercial data

| | |
|--------------------------------|------------------------|
| Net weight | 15.28 g |
| Country of origin | China |
| European customs tariff number | 85366990 |
| GTIN | 5713140072046 |
| eCl@ss | 27440214 D-Sub coupler |